



5 Bed
House - Detached
located in Sherfield-
On-Loddon

£2,750 Per month



CHRISTOPHER ANTHONY

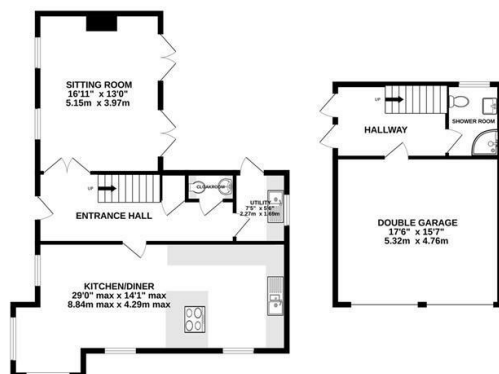
DIRECTIONS

CONTACT

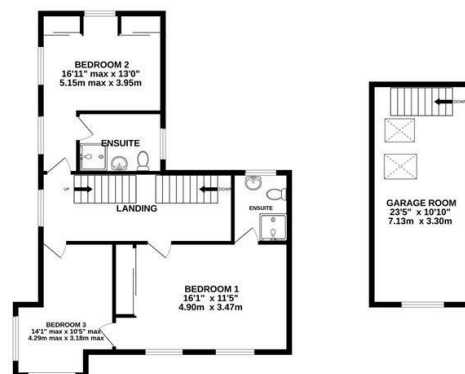
17 Doyle Gardens
Yateley
GU46 6XY

E: lettings@christopher-anthony.co.uk
T: 01189952771
<https://christopher-anthony.co.uk/>

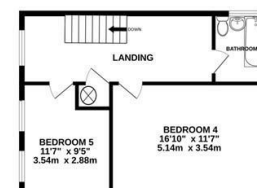
GROUND FLOOR
1155 sq.ft. (107.3 sq.m.) approx.



1ST FLOOR
1005 sq.ft. (93.4 sq.m.) approx.

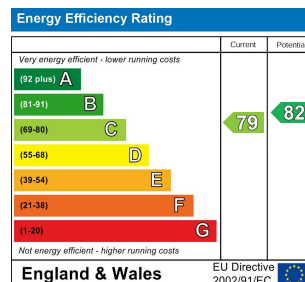


2ND FLOOR
501 sq.ft. (46.5 sq.m.) approx.



TOTAL FLOOR AREA : 2661 sq.ft. (247.3 sq.m.) approx.

Whilst every attempt has been made to ensure the accuracy of the floorplan contained here, measurements of doors, windows, rooms and any other items are approximate and no responsibility is taken for any error, omission or mis-statement. This plan is for illustrative purposes only and should be used as such by any prospective purchaser. The services, systems and appliances shown have not been tested and no guarantee as to their operability or efficiency can be given.
Made with Metropix ©2025



CHRISTOPHER ANTHONY